

PART OF N.W 1/4 SEC. 23, T.5N., R.1W., S.L.B. & M.

UINTAH-HIGHLANDS SUBDIVISION NO 4

231

TAXING UNIT : 244

LOTS 48 - 56
IN WEBER COUNTY

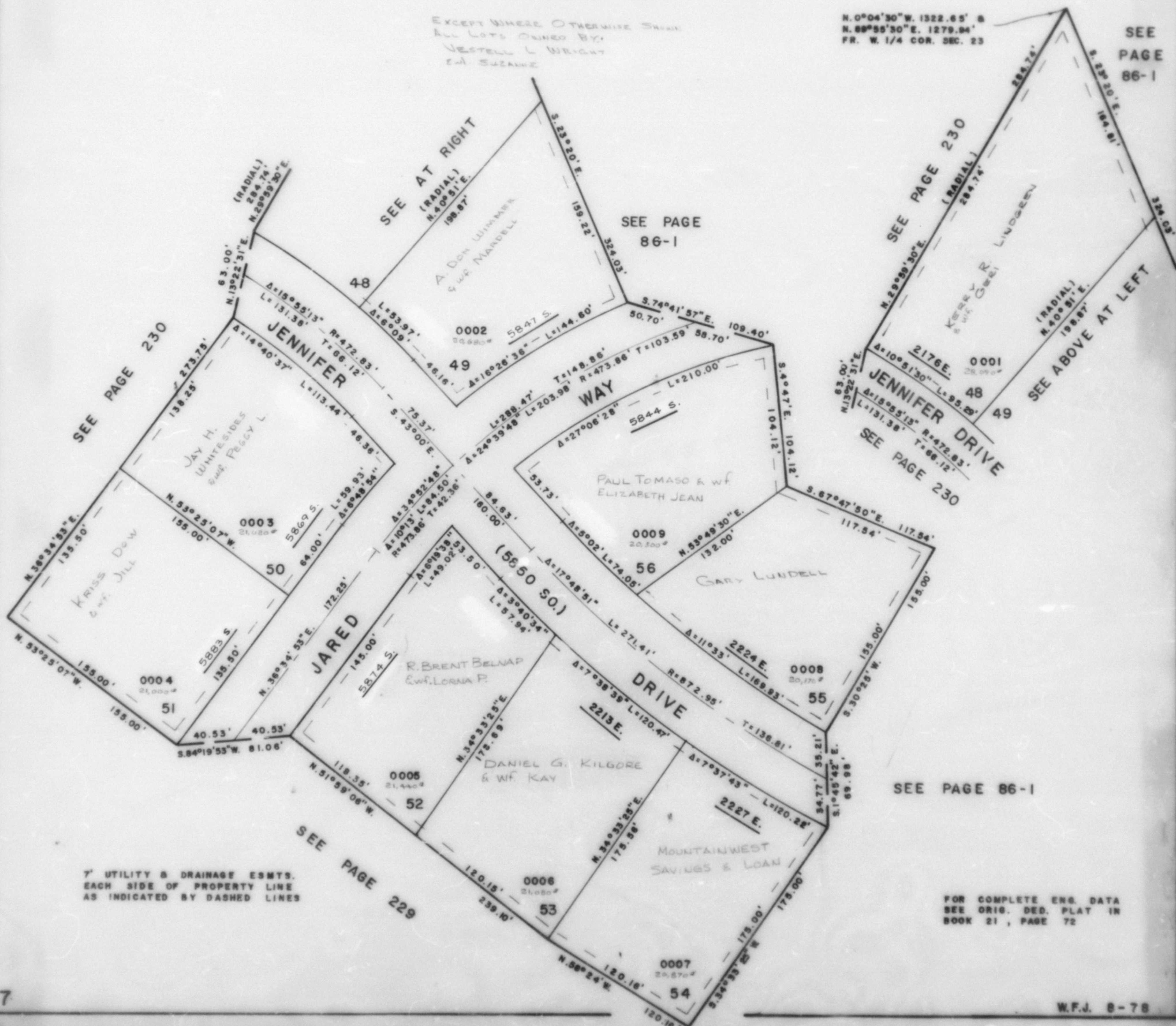
PREFIX : 07-231

SCALE 1" = 50'

EXCEPT WHERE OTHERWISE SHOWN
ALL LOTS OWNED BY:
VESTELL L. WRIGHT
EVA SUZANNE

N. 0°04'30"W. 1322.65' &
N. 89°55'30"E. 1279.94'
FR. W. 1/4 COR. SEC. 23

SEE
PAGE
86-1



7' UTILITY & DRAINAGE ESMTS.
EACH SIDE OF PROPERTY LINE
AS INDICATED BY DASHED LINES